

Entry Requirements

- Passports & Visit

All visitors must hold a passport or a valid travel document for travel to Macao.

All visitors are required to have a visa except nationals of countries which are exempted from a visa or entry permit. For more information on “Visa” and “Entry Permit” Exemption, please visit the website of the Macao Immigration Services of Public Security Police Force: www.gov.mo/en/services/ps-1474/ps-1474b/

A Macao visa can be obtained through the [Embassies / Consulates of the PRC](#) and should be used within its validity. Visitors may also apply for an entry permit or visa upon arrival at the immigration checkpoint. However, visitors from certain countries are required to obtain a visa in advance before their trip to Macao. For more information, please visit the website: www.fsm.gov.mo/psp/eng/psp_top5_3m.html

The above information is for reference only. For further information on entry formalities, please contact the Border Control Department of Public Security Police Force at Tel: (Macao area code) [+853 2872 5488](tel:+85328725488) or email: sminfo@fsm.gov.mo, or visit their website: www.fsm.gov.mo.

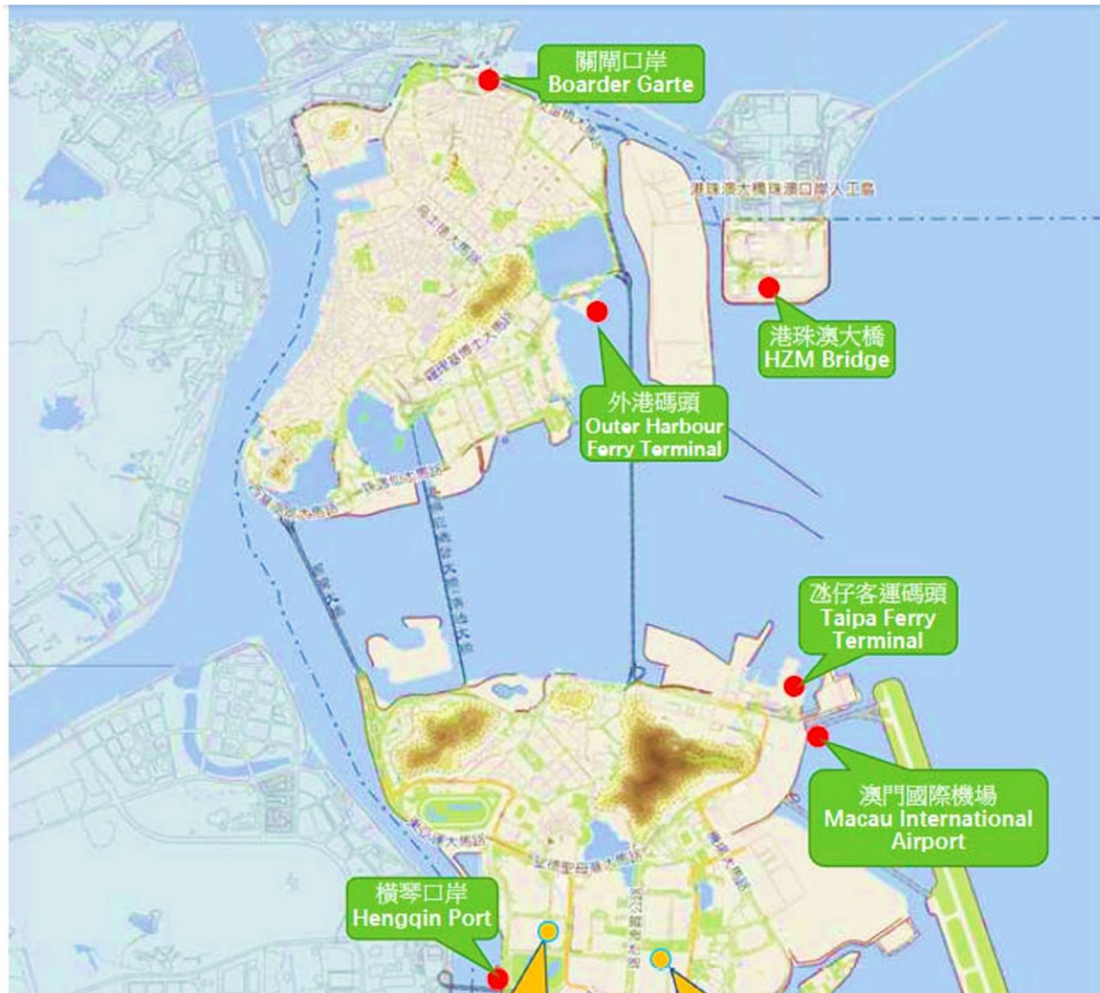
- Customs

All visitors entering Macao must go through Customs clearance and declare any dutiable commodities exceeding duty-free quotas. To find out more details about dutiable commodities and latest duty-free concessions, please visit the Macao Customs Service's website at: www.customs.gov.mo.

According to the provisions of the Law, passengers arriving at Macao carrying cash or CBNIs, such as traveller's cheques, cheques, bills of exchange, money orders and promissory notes, with value of or exceeding MOP 120,000.00, should use the Red Channel with a completed declaration form and make a declaration to the Customs officer. Passengers leaving Macao need to disclose truthfully the amount of cash or CBNIs carried **when** asked by a Customs officer, or they shall be liable to a fine of MOP 1,000.00 to MOP 500,000.00. Travelers who have a layover in Macao SAR and transit to another destination

have no obligation of declaration. For more details, please visit the Macao Customs Service's website: www.customs.gov.mo/cn/customs6.html

Map of Ports of Entry



Travelling to Macao

By Air

Macau International Airport

Macau International Airport operates 24 hours a day, with many visitors entering the territory via numerous major cities around the region. For detailed information on flight schedules, please visit www.macau-airport.com or dial [+853 2886 1111](tel:+85328861111).



Taxis are conveniently available from the taxi rank outside the airport. A surcharge of MOP8.00 is applicable, with each item of luggage carried in the boot charged at MOP3.00.

A number of buses serving the airport – marked AP1, AP1X, MT1, MT4, N2, 26, 36, 51A & 51X - criss-cross the city and stop at major hotels.

Hong Kong International Airport

Airport route ferry and cross-boundary bus services are available for passengers travelling to Macao directly via Hong Kong International Airport.

- **TurboJET** offers airport route ferry service between Macao Outer Harbour Ferry Terminal and SkyPier at Hong Kong International Airport.

For enquiries, please call: Hong Kong [+852 2859 3333](tel:+85228593333), Macao [+853 2855 5025](tel:+85328555025). Website: www.turbojet.com.hk

More information on SkyPier Terminal Ferry Service, please visit [the website of Hong Kong International Airport](#).

- **Macau HK Airport Direct** provides cross-boundary bus service between Hong Kong International Airport Sky Pier Terminal and the Hong Kong-Zhuhai-Macao Bridge Macao Port.

For enquiries, please call: Hong Kong [+852 3193 9188](tel:+85231939188), Macao [+853 6567 0900](tel:+85365670900). Website: www.macauhkairportbus.com

More information on SkyPier Terminal Transfer Coach Service, please visit [the website of Hong Kong International Airport](#).

Helicopter Service to and from Outer Harbour Ferry Terminal

- Sky Shuttle Helicopters Limited (Sky Shuttle) provides services running from Hong Kong or Shenzhen to Macao, the travel time is about 15 minutes.

Enquiries:

- Hong Kong [+852 2108 9917](#)
- Macao [+853 2872 7288](#)
- Shenzhen [+86 755 2345 8741](#)

Website: www.skyshuttlehk.com

By Land

Hong Kong → Macao

The inauguration of Hong Kong- Zhuhai-Macao Bridge allows tourists to enter Macao by vehicles. Tourists can take shuttle buses to enter Macao.

- **Shuttle Bus**

The shuttle bus provides service connecting Hong Kong and Macao ports. For details, please contact:

- **Hong Kong-Zhuhai-Macao Bridge Shuttle Bus**

Macao: [+853 2872 3888](#)

Hong Kong: [+852 3753 3888](#)

Chinese mainland: [+86 400 863 3888](#)

Website: www.hzmbus.com

Tourists may continue their journey by taxi or bus - routes 101X or 102X once arriving the Macao port.

- **Cross-boundary Coach**

Cross-boundary coaches provide services between urban areas of Hong Kong and Macao with fixed pick up/drop-off points and fixed schedules. For details, please contact:

- **One Bus Hong Kong Macau Limited**

Hong Kong: [+852 3703 3981](tel:+85237033981)

Website: www.onebus.hk

- **Hong Kong Macau Express**

Macao: [+853 2832 2198](tel:+85328322198)

Website: www.hkmoexpress.com

- **Eternal East Bus**

Hong Kong: [+852 3760 0888](tel:+85237600888)

Website: www.eebus.com

Major cities in Guangdong Province → Macao

The Kee Kwan Motor Road Co. and China Travel Service (Macao) Ltd. operate a roundtrip air-conditioned bus service from major cities in Guangdong Province to Macao. The buses arrive at Gongbei Port in Zhuhai, from where you may go through the checkpoints at Gongbei Port and Border Gate to Macao. For enquiries, please call:

- **Kee Kwan Motor Road Co.**

Macao: [+853 2893 3888](tel:+85328933888)

Zhuhai: [+86 756 828 5313](tel:+867568285313) / [+86 756 888 5218](tel:+867568885218) / [+86 756 828 1003](tel:+867568281003)

- **China Travel Service (Macao) Ltd.**

Macao: [+853 2878 8342](tel:+85328788342) / [+853 2870 0888](tel:+85328700888)

Zhuhai: [+86 756 889 9228](tel:+867568899228)

Website: www.cts.com.mo

In addition, coach companies offer direct bus services from **Macao International Airport** to major cities in Guangdong Province.

Enquiry hotline: [+853 2888 1228](tel:+85328881228)

Website: www.macao-airport.com/en/transportation/transport-connection

Gateways available from Chinese mainland to Macao by land:

- **The Border Gate**
Opening hours: 6:00am to 1:00am
- **Macao Port Zone of Hengqin Port**
Opening hours: 24 hours
- **The Hong Kong-Zhuhai-Macao Bridge Frontier Post at Macao Port**
8:00am to 10:00pm: Tourists from Zhuhai can travel to Macao via the Frontier Post on foot.
- **Qingmao**
Opening hours: 24 hours (**for passengers allowed**)

By Sea

Hong Kong → Macao

- **TurboJET**

The TurboJET provides ferry services between Hong Kong (Hong Kong - Macau Ferry Terminal) and Macao (Outer Harbour Ferry Terminal/Taipa Ferry Terminal)

For enquiries, please call:

- Macao [+853 2855 5025](tel:+85328555025)
- Hong Kong [+852 2859 3333](tel:+85228593333)
- International toll free Tel [+800 3628 3628](tel:+80036283628)(available in Chinese mainland and Taiwan region)

Website: www.turbojet.com.hk

- **Cotai Water Jet**

The travel time for this ferry service between Hong Kong (Hong Kong -

Macao Ferry Terminal) and Macao (Taipa Ferry Terminal) is approximately 1 hour.

For bookings, please call:

- Macao [+853 6616 7610](tel:+85366167610)
- Hong Kong [+852 2359 9990](tel:+85223599990)

Website: www.cotaiwaterjet.com

Shenzhen → Macao

- **Yuet Tung Shipping Co. Ltd.**

The Yuet Tung Shipping Co. Ltd. offers a ferry service between Macao Taipa Ferry Terminal and Shenzhen Shekou or Fuyong.

For enquiries, please call: Macao [+853 2885 0272](tel:+85328850272).

- **TurboJET** offers a ferry service between Macao Outer Harbour Ferry Terminal and Shenzhen Shekou.

For enquiries, please call: Macao [+853 8790 6203](tel:+85387906203).

Website: www.turbojet.com.hk

Zhuhai → Macao

- **Yuet Tung Shipping Co. Ltd.** offers ferry service between Macao and Zhuhai:

- Macao Inner Harbour Ferry Terminal ↔ Zhuhai Wanzai Pier

- Macao Taipa Ferry Terminal ↔ Zhuhai Guishan Island

For enquiries, please call: Macao [+853 2885 0272](tel:+85328850272).

Zhongshan → Macao

- **Yuet Tung Shipping Co. Ltd.** offers a ferry service between Macao Taipa Ferry Terminal and Zhongshan Passenger Port. The journey takes about 1 hour.

For enquiries, please call: Macao [+853 2885 0272](tel:+85328850272).